



- 1) Touch Screen display 17" with 1024x768 pixel resolution
- 2) Adjustable display height
- 3) Dynamic platform with 55 cm diameter
- 4) Support platform and assistance 110x110 cm
- 5) Trunk sensor
- 6) Wrapping upper supports

System structure

- Dimension and weight of the system:
 Base: 150 cm x 160 cm
 Height: 180-200 cm
 Weight: 10 Kg

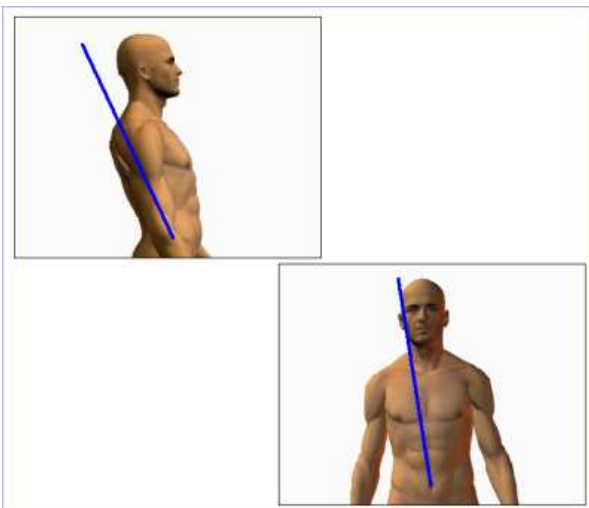
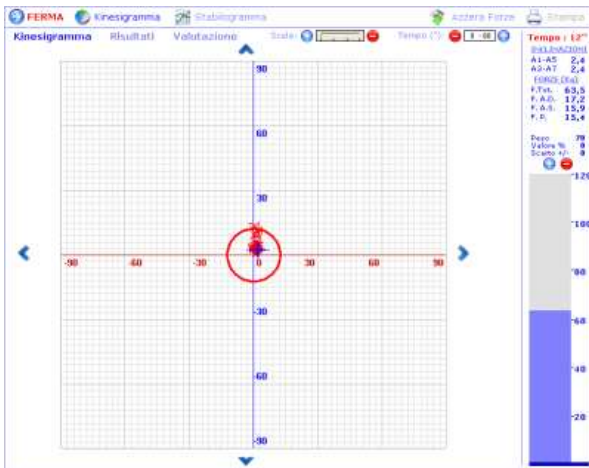
System requirements (not included)

- Control unit (processor):
 Last generation processor
 Disk capacity: 150 Gbyte
- RAM memory: 1 Gbyte
 QWERTY keyboard –Optical mouse
 Serial communication port RS232
 S.O. Windows XP multilanguage
- Colour printer INKJET – HP DeskJet

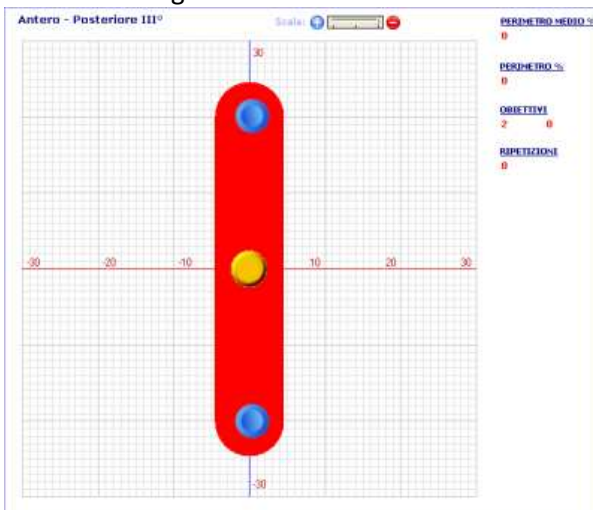
System functionality

- Stability: totally static (stabilometric)
- Sampling reading measure: 20 Hz.
- Patien's load capacity: 120Kg (135 kg security). Maximum resolution measure resolution 0,1Kg.

Stability assessment modules



Training and Rehabilitation modules



Manuals

- Operator's manual (paper and digital)
- Software manual (digital)
- Clinical manual (digital)

Functions of the system (version 2.1):

- Assessment modules:
 - Stability assessment
- Analysis and training modules:
 - Flat view and graphics
 - Rehabilitative tracings
 - Rehabilitative tracings management (builder)
- Protocols and vital statistics:
 - Patient files
 - Test chronology and comparison

Electric parameters

- Electric supply: 230 VAC, 50/60 Hz
- Absorbed power: 400 watts
- Medical decouple transformer : 230v/24v P.nom. 600 VA.

Certifications

- Pursuant to the European law EN 60601- 1 (CEI 62- 5)
- Pursuant to the European guidelines 93/42/CEE
- Class II Piece of equipment- Type B applied parts

Guarantee

- 24 months