



- 1) Static platform with 55cm diameter.
- 2) Platform with a support of 110x110 cm, height 21 cm.

### System structure

- Dimension and weight of the system:

Base: 150 cm x 160 cm

Height: 180-200 cm

Weight: 10 Kg

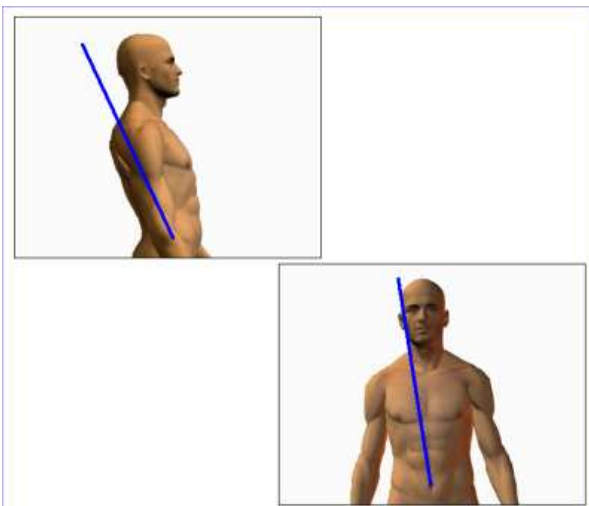
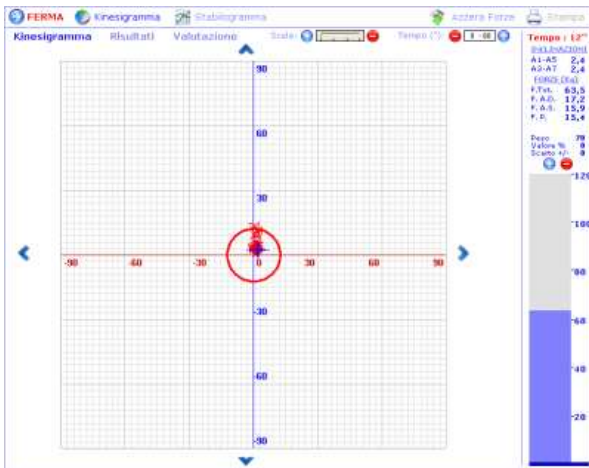
### System requirements (not included)

- Control unit (processor):  
Last generation processor  
Disk capacity: 150 Gbyte
- RAM memory: 1 Gbyte  
QWERTY keyboard –Optical mouse  
Serial communication port RS232  
S.O. Windows XP multilanguage
- Colour printer INKJET – HP DeskJet

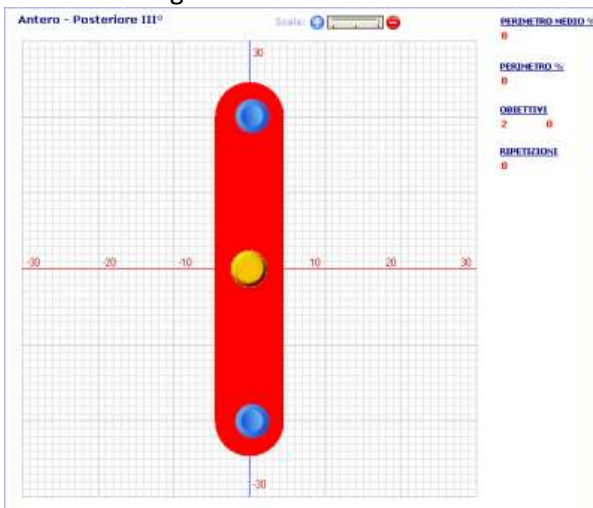
### System functionality

- Stability: totally static (stabilometric)
- Sampling reading measure: 20 Hz.
- Patient's load capacity: 120Kg (135 kg security). Maximum resolution measure resolution 0,1Kg.

### Stability assessment modules



### Training and Rehabilitation Modules



### Manuals

- Operator's manual (paper and digital)
- Software manual (digital)
- Clinical manual (digital)

### Functions of the system (version 2.1):

- Assessment modules:
  - Stability assessment
- Analysis and training modules:
  - Flat view and graphics
  - Rehabilitative tracings
  - Rehabilitation tracings management (builder)
- Protocols and vital statistics:
  - Patient Files
  - Tests Chronology and comparison

### Electric parameters

- Electric supply: 230 VAC, 50/60 Hz
- Absorbed power: 400 watts
- Medical decouple transformer : 230v/24v P.nom. 600 VA.

### Certifications

- Pursuant to the European law EN 60601- 1 ( CEI 62- 5 )
- Pursuant to the European guidelines 93/42/CEE
- Class II Piece of equipment- Type B applied parts

### Guarantee

- 24 months