



- 1) Touch Screen display 17" with 1024x768 pixel resolution
- 2) Adjustable display height
- 3) Dynamic platform with 55 cm diameter
- 4) Support platform and assistance 110x110 cm
- 5) Height 21 cm
- 6) Trunk sensor
- 7) Adjustable upper supports
- 8) Support for trunk modality

System structure

- Dimension and weight of the system:
Base: 100cmx130cm
Height: 150cm
Weight: 80 Kg

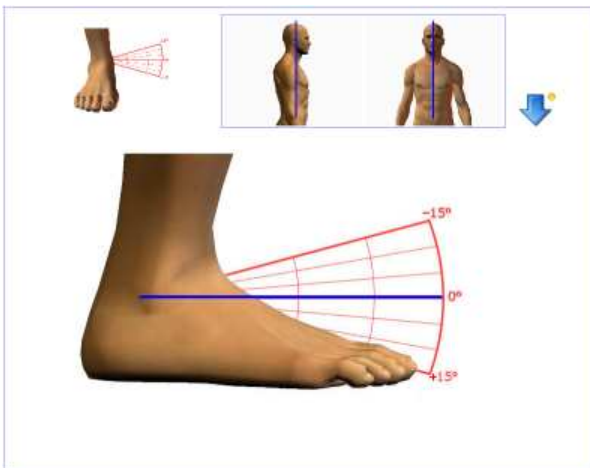
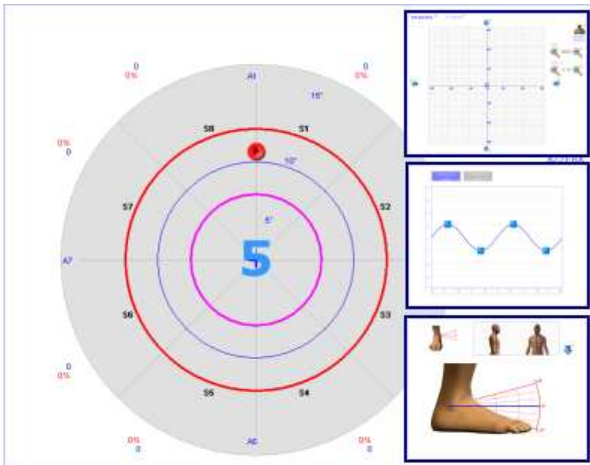
Control unit (not included requirement)

- Last generation processor
Disk capacity:150 Gbyte
RAM memory: 1Gbyte
QWERTY keyboard- optical mouse
Serial communication port RS232
S.O. windows XP Multilanguage
- Colour printer INKJET (not included requirement)

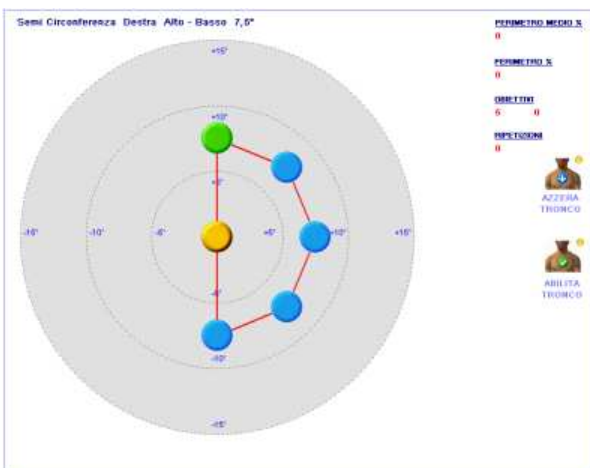
Functionality of the system

- Stability: 10 levels of instability with relative comparison to the patient's weight
- Possible stability modalities:
 - Totally dynamic
 - Independent regulation on the four axis
 - Totally static (stability)
 - Monopodalic position
 - Sitting position
- Dynamic: 15° degrees of inclination from horizontal position to all the directions. 0.1° measure reading maximum resolution
- Measures reading sampling: 20 Hz
- Patient's load capacity: 120 Kg (135 Kg safety). 0.1 Kg measure reading maximum resolution

Assessment and analysis modules



Training and rehabilitation module



Manuals

- Operator's manual (paper and digital)
- Software manual (digital)
- Clinical manual (digital)
- Rehabilitative protocols (ankle, knee, hip, trunk)

Function of the software (version 3.5):

- Assessment modules:
 - Proprioceptive Pre-assessment
 - Monoaxial proprioceptive assessment
 - Multiaxial proprioceptive assessment
 - Disequilibrium/Skill assessment
 - Time/ dynamic assessment
 - Equilibrium management assessment
- Analysis and training modules:
 - Flat view and graphics
 - Rehabilitative tracings
 - Rehabilitative tracings management (builder)
- Protocols and vital statistics:
 - Patient files
 - Manuals and Protocols
 - Tests chronology and comparison
- Games
 - Ping-Pong
 - Light

Electric parameter

- Electric Supply: 230 VAC, 50/60 Hz
- Absorbed power: 400 Watts
- Medical Decouple Transformer 230v/24v P.nom. 600 VA

Certifications :

- Pursuant to the European law EN 60601- 1 (CEI 62- 5)
- Pursuant to the European guidelines 93/42/CEE
- Class II Piece of equipment- Type B applied parts

Guarantee:

- 24 months