



- 1) Static/dynamic platform with a 47cm diameter
- 2) Support platform of 110cmx110cm, height 20cm
- 3) Adjustable upper supports
- 4) Trunk sensor
- 5) Support for trunk modality

### System structure

- Dimension and weight of the system:  
Base: 100cmx130cm  
Height: 150cm  
Weight: 80 Kg

### Control unit (not included requirement)

- Last generation processor  
Disc capacity:150 Gbyte  
RAM memory: 1Gbyte  
QWERTY keyboard- optical mouse  
Serial communication port RS232  
S.O. windows XP Multilanguage
- Colour printer INKJET (not included requirement)

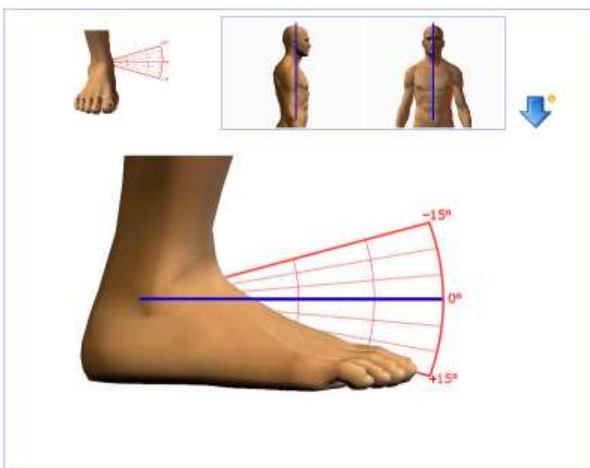
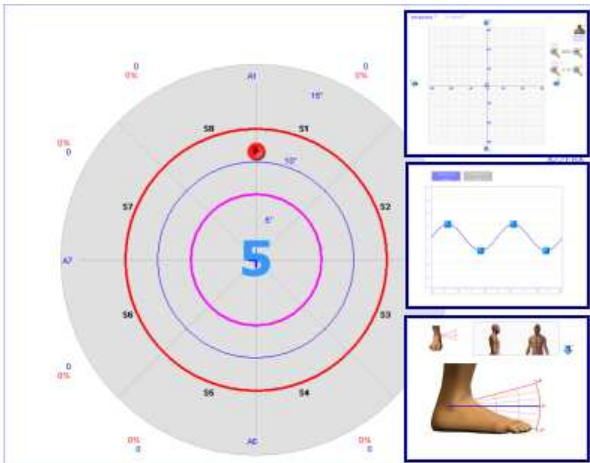
### Functionality of the system

- Stability: 10 levels of instability with relativity compared to the patient's weight
- Possible stability modality:
  - Totally dynamic
  - Independent regulation on the four axis
  - Totally static (stability)
  - Monopodalic position
  - Seat position
- Dynamic: 15° degrees of inclination from horizontal position to all the directions. 0.1° measure reading maximum resolution
- Measures reading sampling: 20 Hz
- Patient's load capacity: 120 Kg (135 Kg safety). 0.1 Kg measure reading maximum resolution

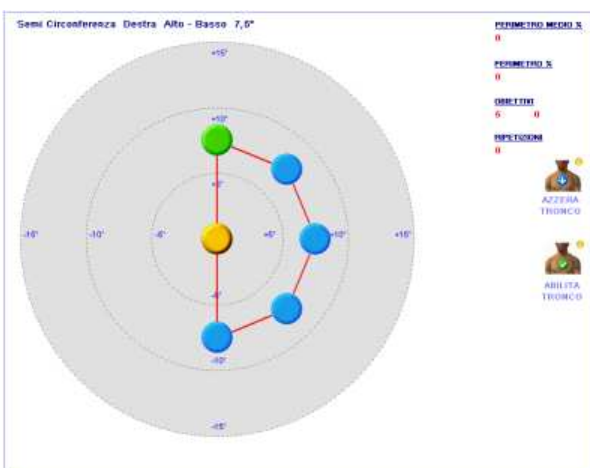
### Manuals

- Operator's manual (paper and digital)
- Software manual (digital)
- Clinical manual (digital)
- Rehabilitative protocols (ankle, knee, hip, trunk)

### Assessment and analysis modules



### Training and rehabilitation module



### Function of the software (version 3.5):

- Assessment modules:
  - Proprioceptive Pre-assessment
  - Monoaxial proprioceptive assessment
  - Multiaxial Proprioceptive assessment
  - Disequilibrium/Skill assessment
  - Time/ dynamic assessment
  - Equilibrium management assessment
- Analysis and training modules:
  - Flat view and graphs
  - Rehabilitative tracings management (builder)
  - Rehabilitative tracings
- Protocols and vital statistics:
  - Patient files
  - Manuals and Protocols
  - Tests chronology and comparison
- Games
  - Ping-Pong
  - Light

### Electric parameter

- Electric Supply: 230 VAC, 50/60 Hz
- Absorbed power: 400 Watts
- Medical Decouple Transformer 230v/24v P.nom. 600 VA

### Certifications :

- Pursuant to the European law EN 60601- 1 ( CEI 62- 5 )
- Pursuant to the European guidelines 93/42/CEE
- Class II Piece of equipment- Type B applied parts

### Guarantee:

- 24 months