



- 1) Touch Screen display 17" with 1024x768 pixel resolution
- 2) Adjustable display height
- 3) Dynamic/Static platform with 55 cm diameter
- 4) Support platform and assistance 110x110 cm, ground elevation of 21 cm.
- 5) Trunk sensor
- 6) Wrapping upper supports

### System structure:

- Dimensions and weight system:  
Base: 150 cm x 160 cm  
Height: 180-200 cm  
Weight: 95 Kg

### System requirements (not included)

- Touch screen monitor (not included):  
Dimensions: 17"  
Resolution: 1024 x 768 pixels  
Angle resolution: vertical 45° horizontal 45°  
Height resolution: from 180 cm to 200cm
- Control unit (not included):  
Last generation processor  
Disk capacity: 150 Gbyte  
RAM memory: 1 GByte  
QWERTY keyboard- optical mouse  
Serial communication port RS232  
S.O. windows XP Multilanguage
- Colour printer INKJET (not included)

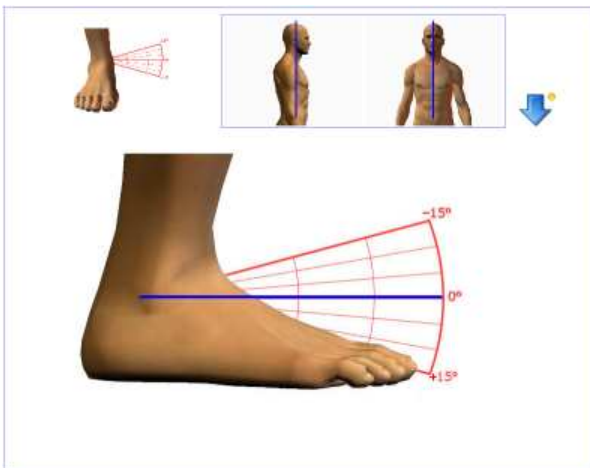
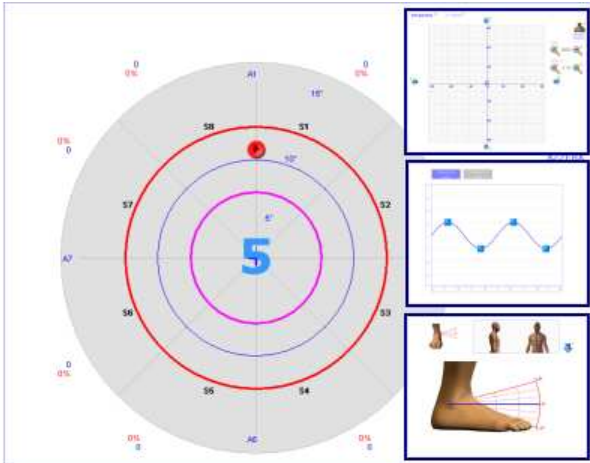
### Functionality of the system

- Stability: 50 degrees of instability with relative comparison to the patient's weight

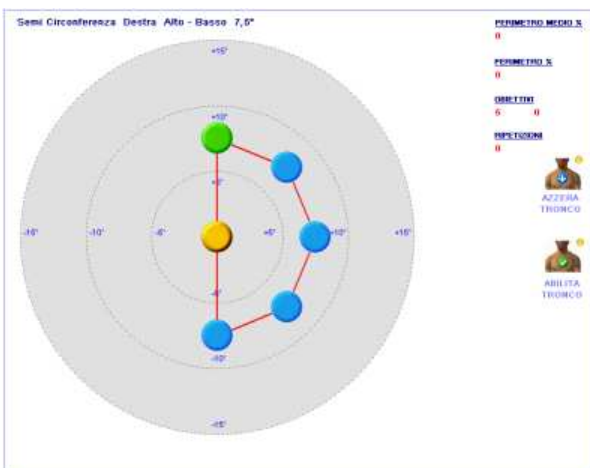
#### Possible stability modality:

- totally dynamic
- front-behind monoaxial block
- left-right monoaxial block
- totally static (stabilometric)
- Dynamic: 15° degrees of inclination from horizontal position to all the directions. 0.1° measure reading maximum resolution
- Measures reading sampling: 20 Hz
- Patient's load capacity: 120 Kg (135 Kg safety). 0.1 Kg measure reading maximum resolution

### Assessment and analysis module



### Training and rehabilitation module



### Manuals

- Operator's manual (paper and digital)
- Software manual (digital)
- Clinic manual (digital)
- Rehabilitative protocols (ankle, knee, hip)

### Functions of the software (version 3.5)

- Assessment modules:
  - Proprioceptive Pre-assessment
  - Monoaxial proprioceptive assessment
  - Multiaxial Proprioceptive assessment
  - Disequilibrium/Skill assessment
  - Time/ dynamic assessment
  - Equilibrium management assessment
- Analysis and training modules:
  - Flat view and graphs
  - Rehabilitative tracings management (builder)
  - Rehabilitative tracings
- Protocols and vital statistics:
  - Patient files
  - Manuals and Protocols
  - Tests chronology and comparison
- Games
  - Ping-Pong
  - Light

### Electric parameter

- Electric Supply: 230 VAC, 50/60 Hz
- Absorbed power: 400 Watts
- Medical Decouple Transformer 230v/24v P.nom. 600 VA

### Certifications :

- Pursuant to the European law EN 60601- 1 ( CEI 62- 5 )
- Pursuant to the European guidelines 93/42/CEE
- Class II Piece of equipment- Type B applied parts

### Guarantee:

- 24 months