



- 1) Dynamic platform with a diameter of 47 cm.
- 2) Support platform of 110x110 cm, height 20 cm.
- 3) Trunk sensor
- 4) Support for trunk modality

System structure:

- Dimensions and weight system:
Base: 100 cm x 100 cm
Height: 19 cm
Weight: 60 Kg

System requirement (not included)

- Control unit (not included requirement):
Last generation processor
Disc capacity: 150 Gbyte
RAM memory: 1 GByte
QWERTY keyboard- optical mouse
Serial communication port RS232
S.O. windows XP Multilanguage
- Colour printer INKJET DeskJet (not included requirement)

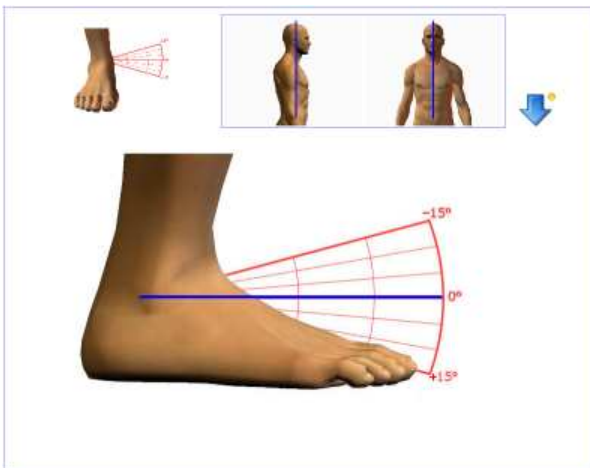
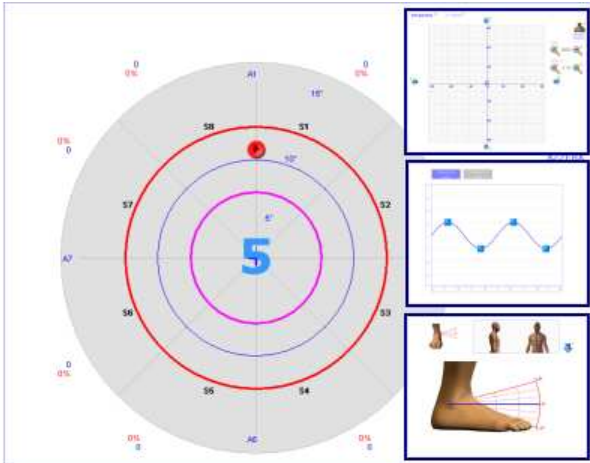
Functionality of the system

- Stability: 10 levels of instability with relative comparison to the patient's weight
- Possible stability modality:
 - totally dynamic
 - independent setting on the four axis
 - monopodalic position
- Dynamic: 15° degrees of inclination from horizontal position to all the directions. 0.1° measure reading maximum resolution
- Measures reading sampling: 20 Hz

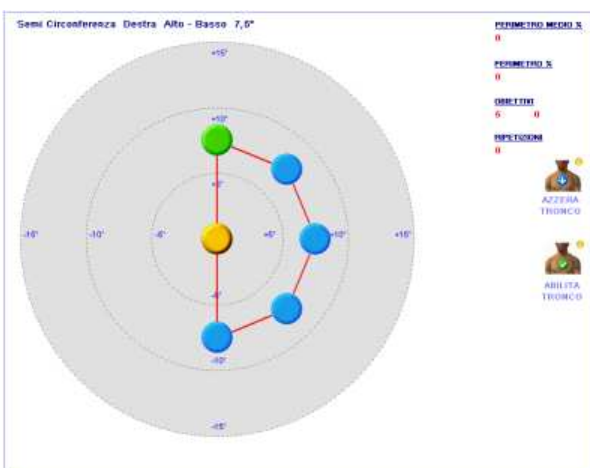
Manuals

- Operator's manual (paper and digital)
- Software manual (digital)
- Clinic manual (digital)
- Rehabilitative protocols (ankle, knee, hip, trunk)

Assessment and analysis module



Training and rehabilitation module



Functions of the software (version 3.5)

- Assessment modules:
 - Proprioceptive Pre-assessment
 - Monoaxial proprioceptive assessment
 - Multiaxial Proprioceptive assessment
 - Disequilibrium/Skill assessment
 - Time/ dynamic assessment
 - Equilibrium management assessment
- Analysis and training modules:
 - Flat view and graphs
 - Rehabilitative tracings management (builder)
 - Rehabilitative tracings
- Protocols and vital statistics:
 - Patient files
 - Manuals and Protocols
 - Tests chronology and comparison
- Games
 - Ping-Pong
 - Light

Electric parameter

- Electric Supply: 230 VAC, 50/60 Hz
- Absorbed power: 400 Watts
- Medical Decouple Transformer 230v/24v P.nom. 600 VA

Certifications :

- Pursuant to the European law EN 60601- 1 (CEI 62- 5)
- Pursuant to the European guidelines 93/42/CEE
- Class II Piece of equipment- Type B applied parts

Guarantee:

- 24 months