



Content

- 1) Diplomatic bag for the portability of all the system
- 2) Mobile platform with a wireless transmitter
- 3) 3 different adjuster for different levels of instability
- 4) USB key receiver for the connection to every personal computer with USB port (desktop or laptop)
- 5) CD-ROM with software PROKIN Wireless for Windows O.S. (XP- VISTA)
- 6) Battery charger stilo AA NI-Cd
- 7) 4 rechargeable batteries AA Ni-Cd
- 8) Quick install documentation

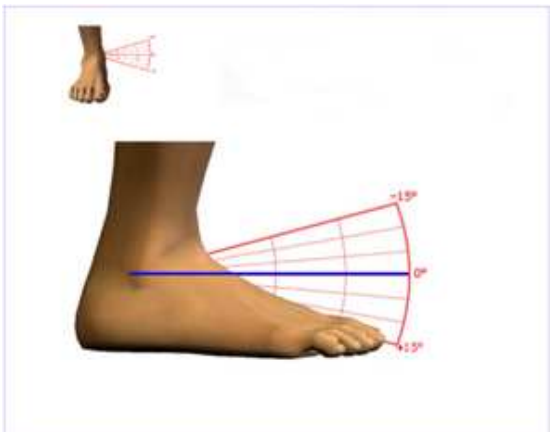
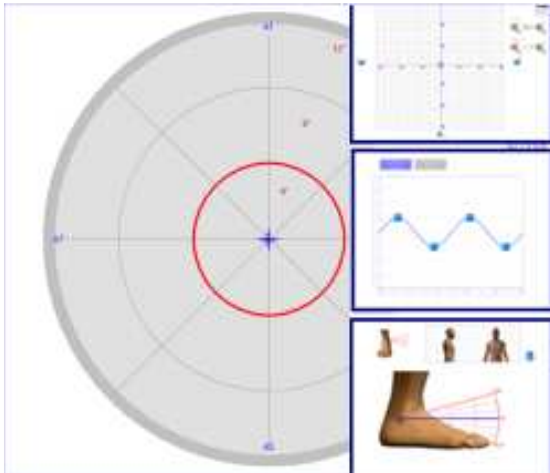
System Structure

- Dimensions and weight of the mobile system
Base: 35cmx50cm
Height: 10cm
Weight: 6 Kg
- Control unit (not included requirement)
Desktop and laptop
Last generation processor
Disk capacity: 150 Gbyte
RAM memory: 1 Gbyte
QWERTY keyboard- optical mouse
Serial communication port RS232
S.O. windows XP Multilanguage
- Colour printer INKJET DeskJet (not included requirement)

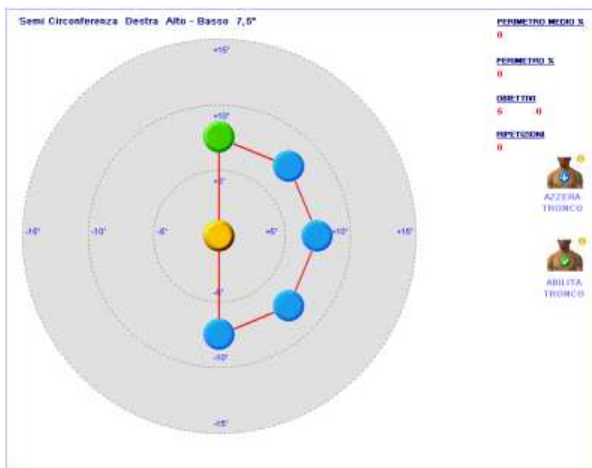
Functionality of the system

- Connection to the wireless processor (without cables) with a frequency of 2,4 GHz.
- Stability: 5 levels of instability through 3 different destabilizing bends.
- Possible modality of stability:
 - 3 levels of multiaxial instability
 - 2 levels of monoaxial instability
 - Monopodalic position
 - Sitting position
- Dynamic: 12° degrees of inclination from horizontal position to all the directions. 0.1° measure reading maximum resolution
- Measures reading sampling: 20 Hz
- Patient's load capacity: 120 Kg (135 Kg safety).

Assessment and analysis module



Training and Rehabilitation module



Manuals

- Operator's manual (paper and digital)
- Software manual (digital)
- Clinic manual (digital)

Functions of the Software (version 1.0)

- Assessment modules:
 - Disequilibrium mono-multi-axial assessment
 - Equilibrium mono-multi-axial assessment
 - Skill mono-multi axial assessment
- Analysis and training modules:
 - Flat view and graphs
 - Rehabilitative tracings management (builder)
 - Rehabilitative tracings
- Protocols and vital statistics:
 - Patient files
- Games
 - Ping-Pong
 - Light

Electric parameter

- Electric Supply: 3 v DC
- 2 rechargeable batteries AAA
- Batteries charger

Certifications :

- Pursuant to the European law EN 60601- 1 (CEI 62- 5)
- Pursuant to the European guidelines 93/42/CEE
- Class II Piece of equipment- Type B applied parts

Guarantee:

- 24 months