



- 1) Display 19" with resolution 1024x768 pixel.
- 2) Antromorphous arm with three movement degrees
- 3) Electro-pneumatic for power adjustment in a differed way (F1 – F2 – F3)
- 4) Adjustment of the horizontal and vertical sitting
- 5) Elbow support for exercise in intra-extra rotation

System structure

- Dimensions and weight system:
Base: 2000 cm x 110 cm
Height: 160 cm
Weight: 200 Kg

System requirements

- Monitor
Dimension 19"
Resolution: 1024 x 768 pixels
- Control unit (processor):
Last generation processor
Disk capacity : 150 Gbyte
Memory RAM: 1 Gbyte
Keyboard QWERTY – Mouse optical
Serial communication port RS232
S.O. Windows XP multilanguages
- Colour print INKJET – HP DeskJet

System functionality

Mechanics

- 3D Movement of the antropomorphous arm
 - Elevation (0° → 180°)
 - Horizontal inflection extension (-30° → 130°)
 - Intra-extra rotation (-90° → 90°)
 - Angular adjustment 0.1°
- Power modulation on three movement axis with an electro-pneumatic system
 - F1 Elevation to 50 Nm to 100 PSI
 - F2 Inflection-extension 50 Nm to 100 PSI
 - F3 Intra-extra 30 Nm to 100 PSI
- Relief adjustable function of the articular load
- Pain button
- Ancillary button for the activation of the loads

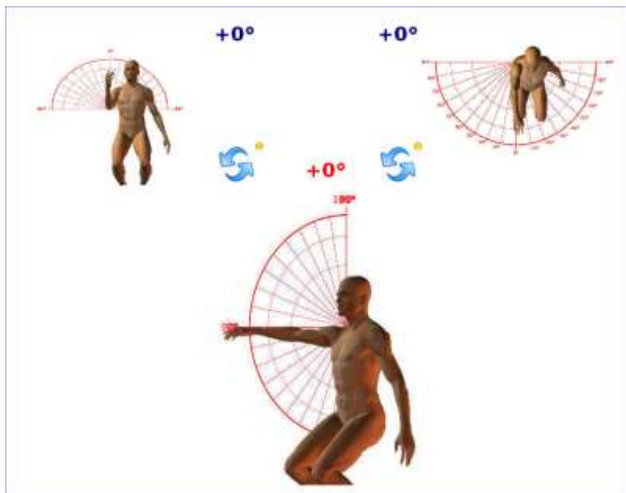
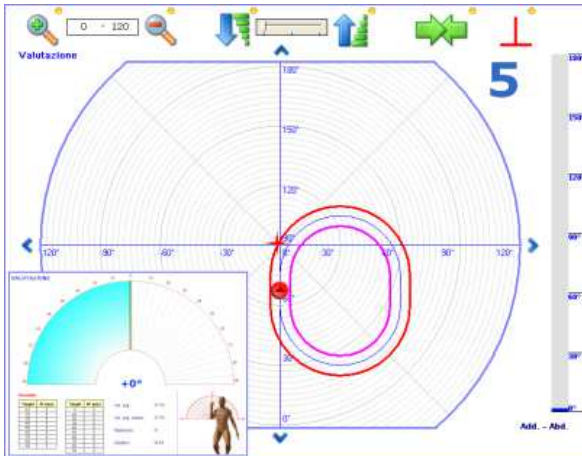
Electronics

- Sampling reading measure: 20 Hz.
- Measure reading maximum resolution: 0.1°

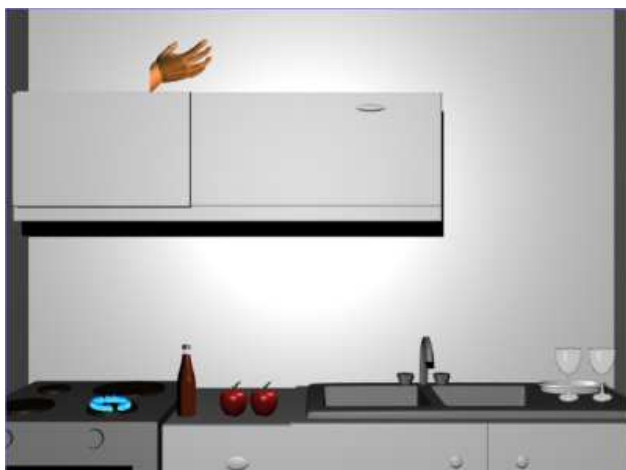
Structure and adjustment

- Forearm adjustment

Analysis and training modules



Occupational therapy modules



- Arm adjustment
- Electronic sitting height adjustment with the patient's load
- Sitting horizontal axis adjustment with the patient's load
- Patient sitting (90° or 130°)
- Position sensor of the arm rotation

Documentation

- Operator's manual (paper or digital)
- Software manual (digital)

Software Functions (version 1.5):

- Assessment modules:
 - Proprioceptive assessment
 - Intra-extra rotation
- Analysis and training modules:
 - flat view and graphs movement monitor
 - Rehabilitative tracings
 - Rehabilitative tracings management (builder)
 - Intra-extrarotation
- Protocols and Patient files:
 - Patient files
- Occupational therapy - games:
 - kitchen
 - Pong
 - Lights
 - Basket

Electric parameters

- Electric supply: 230 VAC, 50/60 Hz
- Absorbed power: 580 watts

Certifications

- Pursuant to the norm EN 60601- 1 (CEI 62- 5)
- Pursuant to the guideline 93/42/CEE
- Class II Recorder – Applied part type B

Warranty

- 24 months